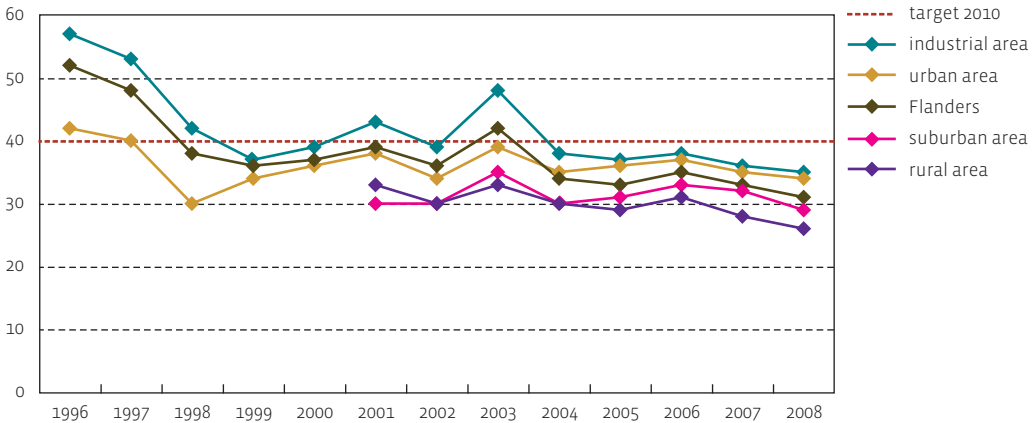




PM10 concentration ($\mu\text{g}/\text{m}^3$)



The method of calculation has been changed slightly so that the data differ from data reported earlier.

Source: based on measurements by the telemetric monitoring network, VMM

Annual average PM10 concentration remains stable

The annual average PM10 concentration gives a picture of the long-term exposure of the population. After a decrease in 1997 and 1998, the concentrations were fluctuating rather. There is no clear improvement visible. In 2008, however, the lowest average concentrations since the beginning of the measurements were measured. 2008 was a favourable meteorological year for particulate matter. The individual impact of emission reduction and meteorology is however difficult to determine. The averages of all types of areas are lower than the 2010 target of 40 $\mu\text{g}/\text{m}^3$. In 2008, the limit value was not exceeded at a single measurement station.

Targets for PM10

In December 2007 the European Parliament and the European Council of Environment Ministers reached an agreement concerning the changing of the limit values of Daughter Guideline (1999/30/EC). On 14 April 2008 a new European Air Quality Directive (2008/50/EC) was approved. This was published on 21 May 2008. The current limit value for the annual average PM10 concentration (40 $\mu\text{g}/\text{m}^3$) that came into force in 2005 remains valid. This limit value is included in the MINA plan 3+ (2008-2010) as a target for 2010. The European limit value for 2010 formulated earlier (20 $\mu\text{g}/\text{m}^3$) that was included in the previous MINA plan 3 is withdrawn as a target for 2010.

| PM10 concentration ($\mu\text{g}/\text{m}^3$) | 1996 | 1998 | 2000 | 2002 | 2004 | 2005 | 2006 | 2007 | 2008 |
|---|------|------|------|------|------|------|------|------|------|
| industrial area | 57 | 42 | 39 | 39 | 38 | 37 | 38 | 36 | 35 |
| suburban area | .. | .. | .. | 30 | 30 | 31 | 33 | 32 | 29 |
| urban area | 42 | 30 | 36 | 34 | 35 | 36 | 37 | 35 | 34 |
| rural area | .. | .. | .. | 30 | 30 | 29 | 31 | 28 | 26 |
| Flanders | 52 | 38 | 37 | 36 | 34 | 33 | 35 | 33 | 31 |