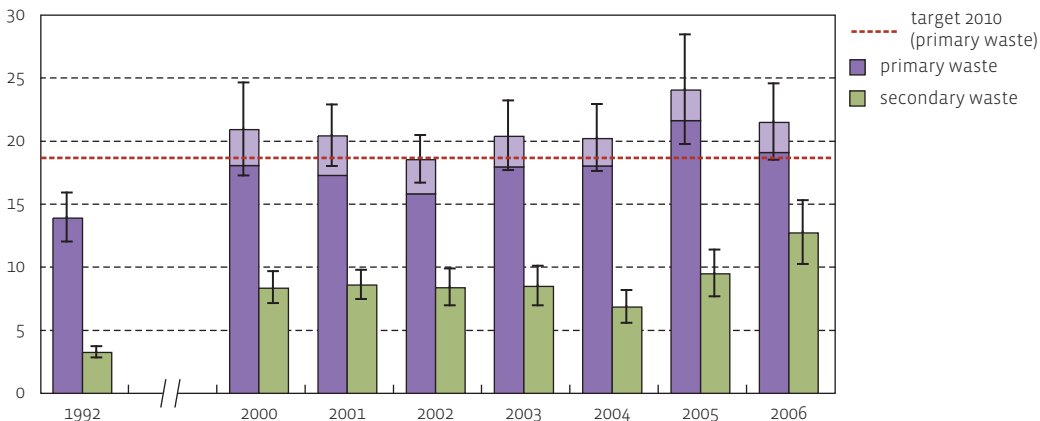




amount of industrial waste (million tonnes)



including waste from the trade & services sector

Since 2000 additional sectors have been taken into account (light purple block). Primary waste results at the moment when a product becomes waste for the first time, i.e. with the first producer; secondary waste is the waste from the waste treatment companies. Figures calculated by extrapolation of reported data. Error bars are the 95% confidence intervals for the total quantity of primary and secondary industrial waste respectively.

Source: OVAM

Amount of primary industrial waste still too high

In 2006 companies produced 21.5 million tonnes of primary industrial waste. That is more than six times the quantity of waste collected from households. Approximately 71% of the primary industrial waste comes from industry, more than half of this comes from the construction sector.

According to MINA plan 3+ (2008-2010) the quantity of primary industrial waste must be reduced by 2010 compared to 2002 and further lag behind the economic growth compared to 2002. Although less primary industrial waste was produced in 2006 than the year before, the amount was still larger than in 2002. The amount of primary industrial waste also increased more strongly than the gross domestic product (GDP) over the period 2002-2006. When the strongly fluctuating waste production of the construction sector is left out of consideration, the amount of primary industrial waste actually stayed fairly constant over the period 2002-2006.

Waste from the waste treatment sector

The treatment of the primary industrial waste and of the household waste by the waste treatment companies produced 12.7 million tonnes of secondary industrial waste in 2006. Secondary waste includes the waste coming from sorting installations, residual waste from the recycling processes and the bottom ash and fly ash from incineration plants.

amount of industrial waste (million tonnes)	1992	2002	2003	2004	2005	2006
primary waste	13.9	15.8	17.9	18.0	21.6	19.1
primary waste additional sectors		2.7	2.4	2.2	2.4	2.4
secondary waste	3.2	8.4	8.5	6.8	9.5	12.7