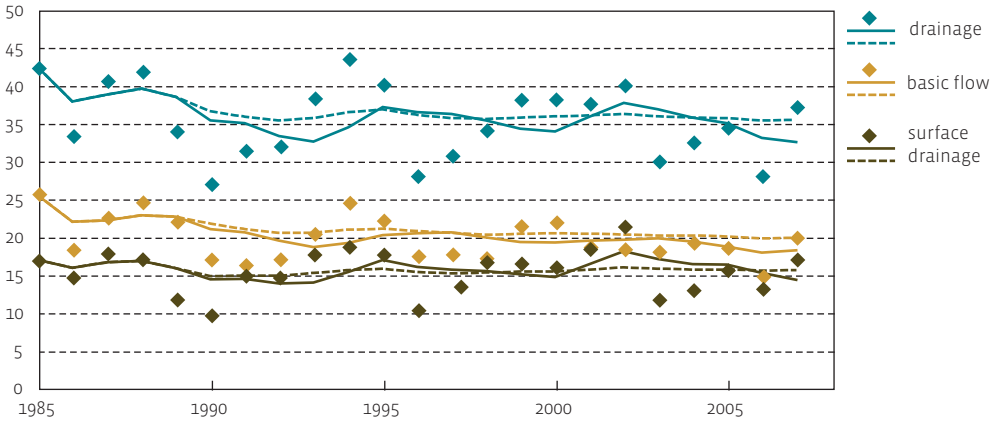




% precipitation



solid line: 5-year average, dotted line: advancing average

Source: VMM

Indications of reduced infiltration of precipitation

Not all fallen precipitation runs off directly into the watercourse. Part will never reach the watercourse as a result of evapotranspiration and other losses. Another part permeates into the soil and reaches the watercourse via underground flows, this is the basis flow. The part of the precipitation that runs off directly to the watercourse is the surface drainage (direct *run-off*).

The part of the fallen precipitation that is drained by the surface drainage shows a slightly increasing pattern over the period 1985-2007. The percentage of the average basis flow experienced a reduction. The proportion of the average basic flow in the average drainage shows a decreasing trend over the period 1985-2007, while the proportion of the surface drainage increases (not visible in the figure).

All this indicates a reduction in the infiltration into the soil of the precipitation in the flow areas considered, a decreased supply to the basic flow and an increasing proportion of the surface drainage.