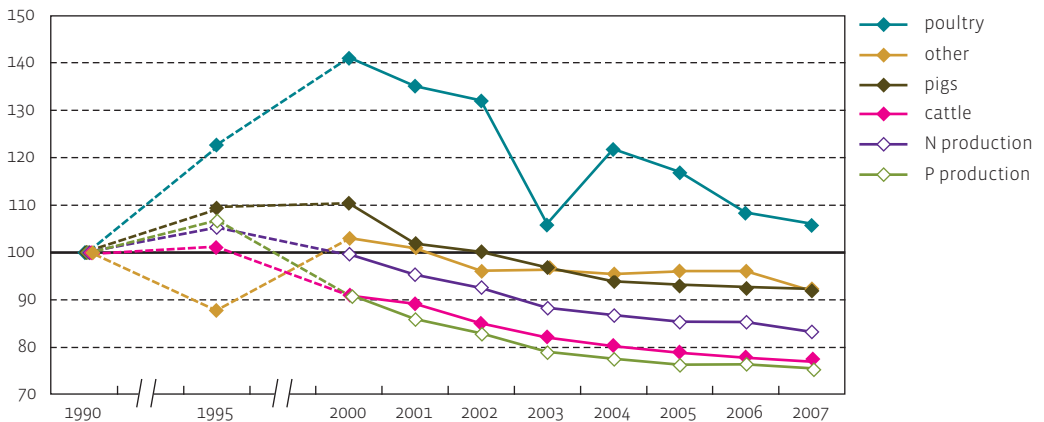


index (1990=100)



Source: 15 May count FOD Economy, ILVO

Fewer animals in agriculture ...

The size of the Flemish cattle stock has been decreasing since 1996 due to improved efficiency (dairy stock) and the worsened economic situation (meat stock). In comparison with 1990, the number of cattle in 2007 had dropped by 23 %. The reduction of the pig stock started after 1999 as a result of the drop in prices (since 1998), the dioxin crisis (1999), the purchase agreement (2000-2004) and a stricter manure policy. The poultry stock underwent a great expansion up to 1998, which was followed by three stable years, but went down from 2000 onwards as a result of the manure policy, the dioxin crisis and the bird flu. The latter, in combination with low prices, is also the cause of a strong temporary fall in 2003.

... and less manure

The production of animal manure has been continuously decreasing since 1999, a peak year for livestock. The decrease is stronger for phosphorus because the poultry stock decreased the most. Poultry manure contains relatively more phosphorus. The main driving force behind the decrease is the decreasing livestock, but also the use of lower nutrient content feed in the pig and poultry industries. The animal manure produced on agricultural land in 2007, with 107 million kg nitrogen and 49 million kg phosphates is under the target of 108 million kg N and above the target of 44 million kg P₂O₅ by 2010 from the MINA plan 3+ (2008-2010).

	1990	1995	2000	2006	2007
cattle (millions)	1.72	1.73	1.56	1.33	1.32
pigs (millions)	6.40	6.99	7.05	5.92	5.90
poultry (millions)	26.0	31.9	36.7	28.1	27.5
animal manure production (ktonnes N)	182	191	181	155	151
animal manure production (ktonnes P ₂ O ₅)	79	84	72	61	60